

Vineyard Site Evaluation For: Hidden Valley Ranch

Oak Grove Road, Amity OR



Gross Plantable Vineyard Acres (approximate): 89.5

Net Plantable Vineyard Acres: Typically, 80-90% of gross plantable vineyard acres depending on layout.

AVA (American Viticultural Area): Eola Hills

Elevation: 250'-535' above sea-level in areas classified as having vineyard potential.

Vineyard Soil Types Present (NRCS Soil Survey): Sedimentary soil types prevail. Major types being; Chehulpum, Steiwer, Hazelair and Witham. Note: It is recommended that an independent soil survey be performed to better define soil type transitions.

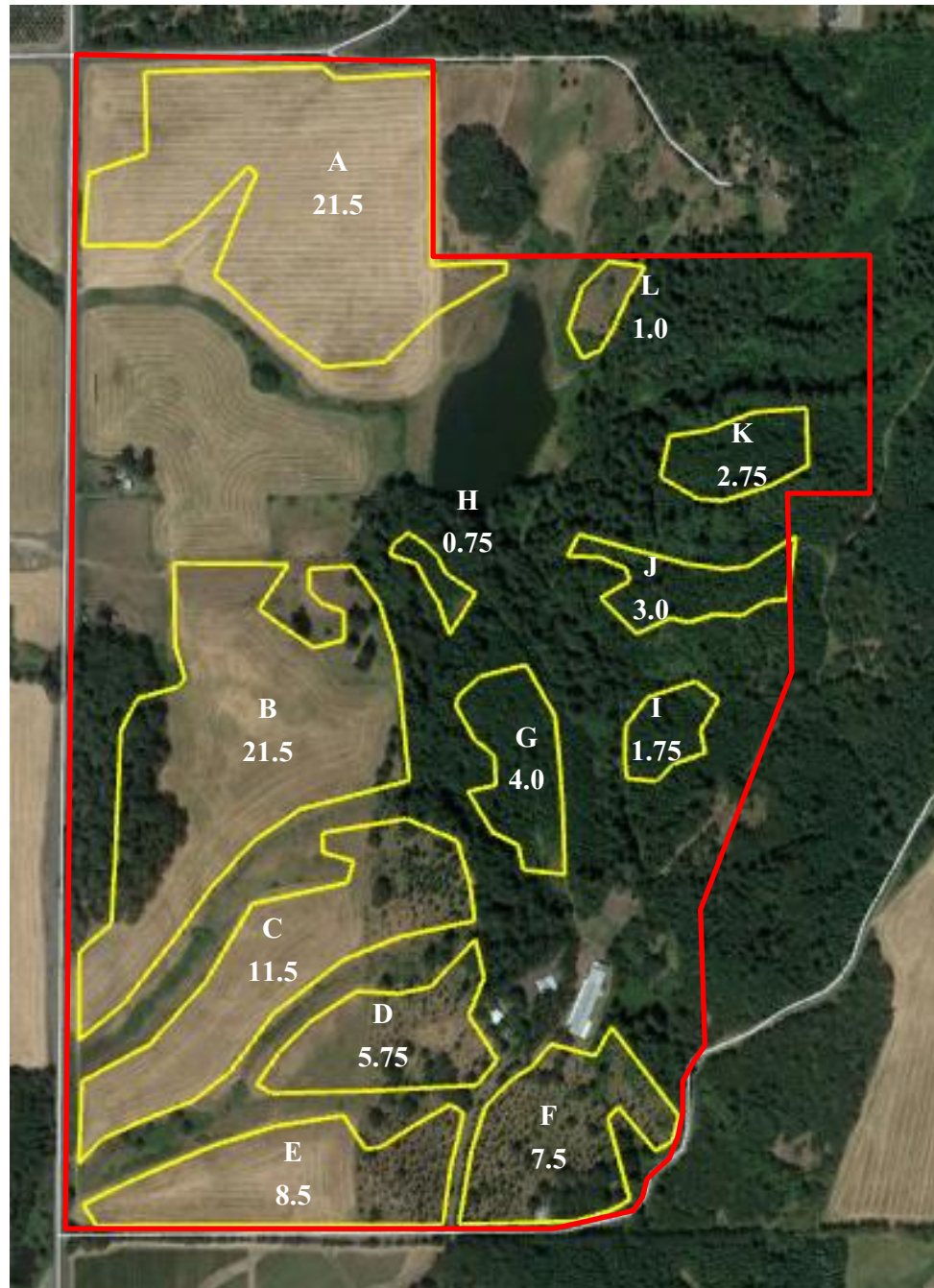
Drainage: The Chehulpum and Hazelair soils will benefit greatly from grid-tiling (artificial sub-surface drain tile installed every 40' to intercept and remove seasonally high-water tables). Localized tiling may be required in areas of soil transition or in natural drainageways.

Slope/Aspect: Areas outlined for vineyard development range from 90 to 180 degrees from north and exist on slopes from 5 to 35 percent.

Irrigation: Recommended given soil type.

Farmability: Many of the forested areas were difficult to access due to heavy underbrush. Topographical maps were relied on heavily in these areas to determine plantable boundaries. Except for the smaller blocks located in the wooded areas, much of the vineyard land on this property is highly farmable. The large reservoir on the property not only is a nice feature with recreational opportunities, it could also provide a very dependable water supply for the property and future irrigation. Soils on this property are not particularly deep or overly fertile and therefore naturally align well with lower-yielding, high quality wine grape production.

Gross Vineyard Land
Acreage Assessment: **89.5 acres**

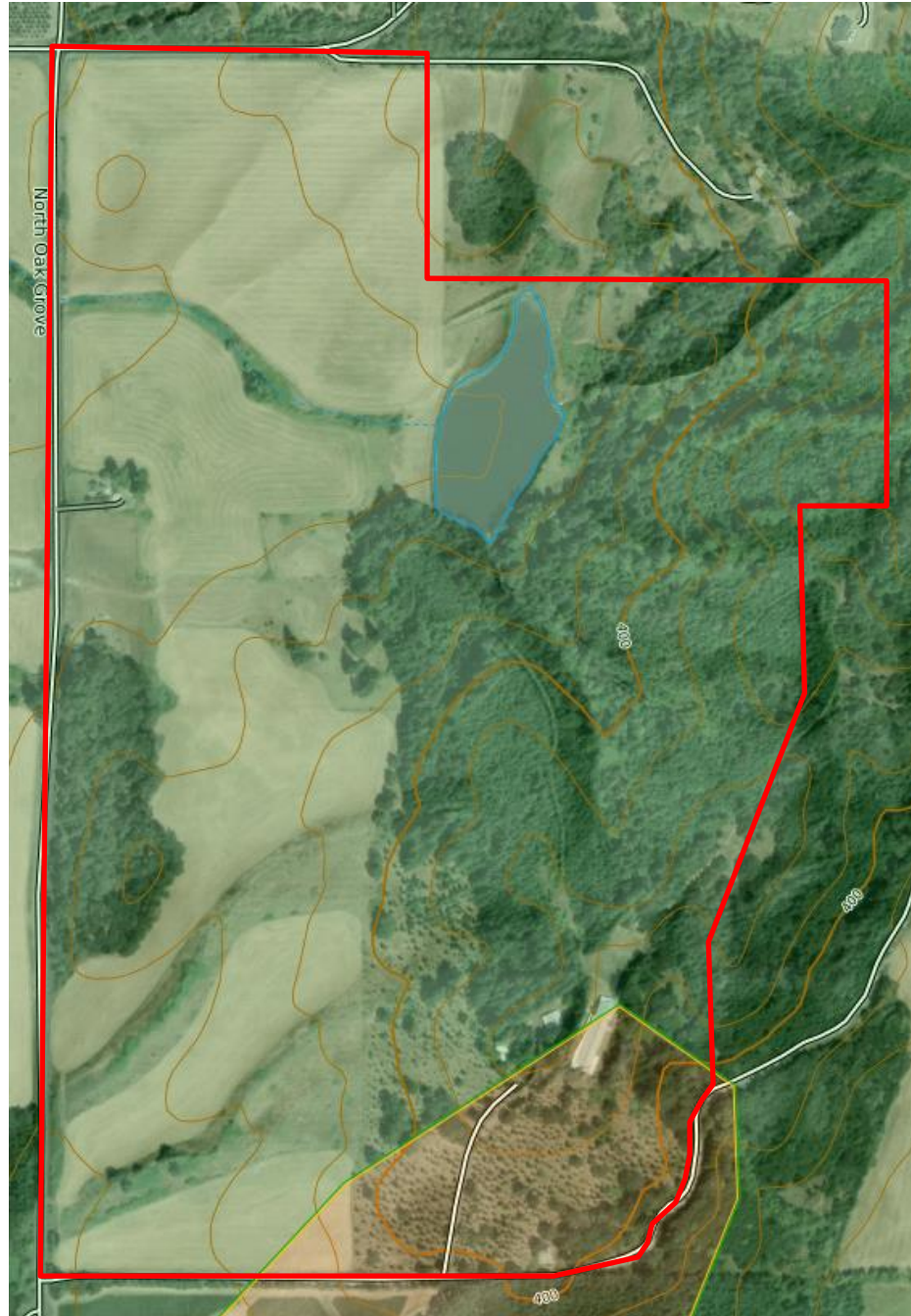


USGS Soil Survey Industry Recognized Vineyard Soils

- 15 – Chehulpum
- 16 – Chehulpum/Steiwer
- 29 – Hazelair
- 67 – Steiwer
- 2798 - Witham



Topo/Lidar Map



Plat Map

